

The Siemens logo is displayed in a white rectangular box in the top-left corner. The word "SIEMENS" is written in a bold, teal, sans-serif font. The background of the slide is a dark blue with a complex, abstract geometric pattern of overlapping translucent polygons and glowing white lines, creating a sense of depth and connectivity.

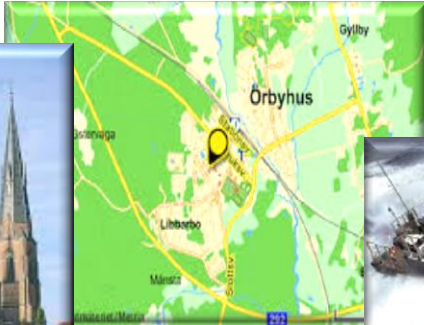
SIEMENS

Siemens Industrial Turbomachinery AB

Big Data and Diagnostics

Dr. Christer Karlsson,
R&D Project Manager and Specialist in Diagnostics

Tiles of life



MÄLARDALENS HÖGSKOLA
ESKILSTUNA VÄSTERÅS

SIEMENS

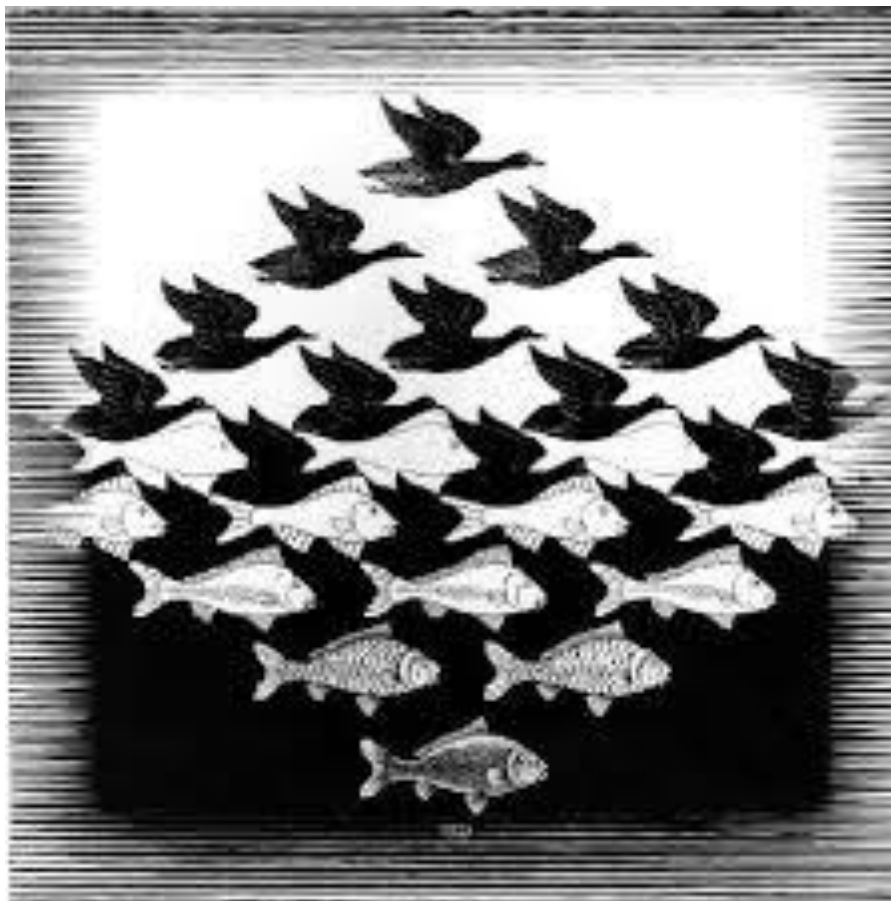


Siemens Industrial Turbomachinery AB

- Siemens is present in the areas: Healthcare, Energy, Infrastructures and Cities, and Industry
- 340,000 (48,000 R&D) co-workers
- SIT: 2,800 (500 R&D) + 700 external
- SIT: 12 000 MSEK turnover
- SIT: 95 % of sales is exported
- SIT: 16,000 visitors annually



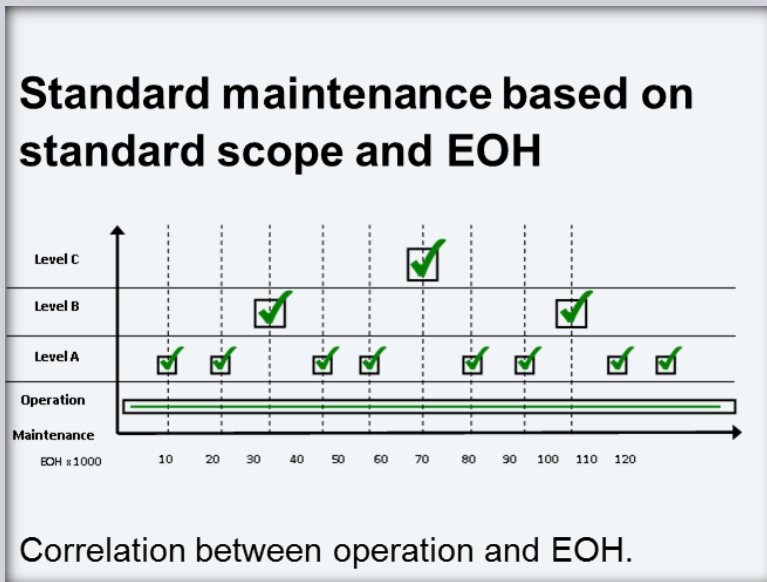
Adaptation to constant change



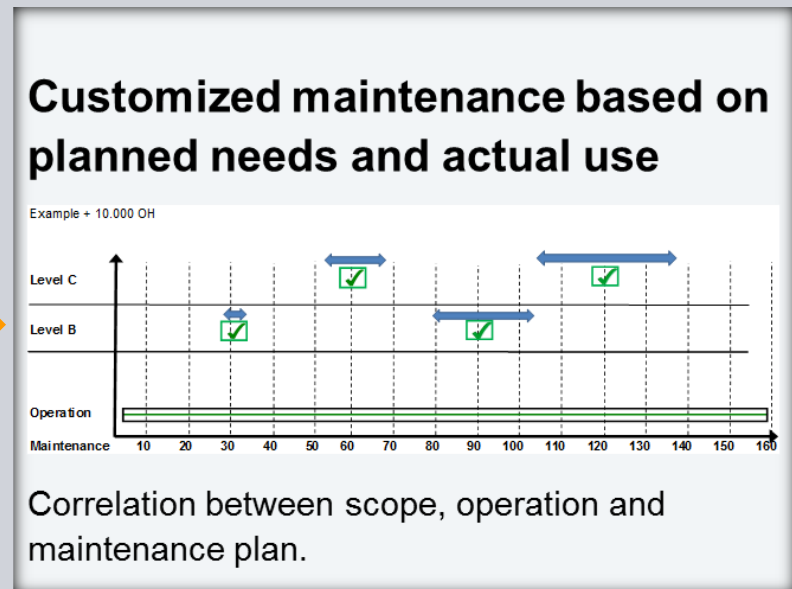
Wikipedia: M.C. Escher, Sky and water, 1938

Moving into the future of gas turbine operation

Today

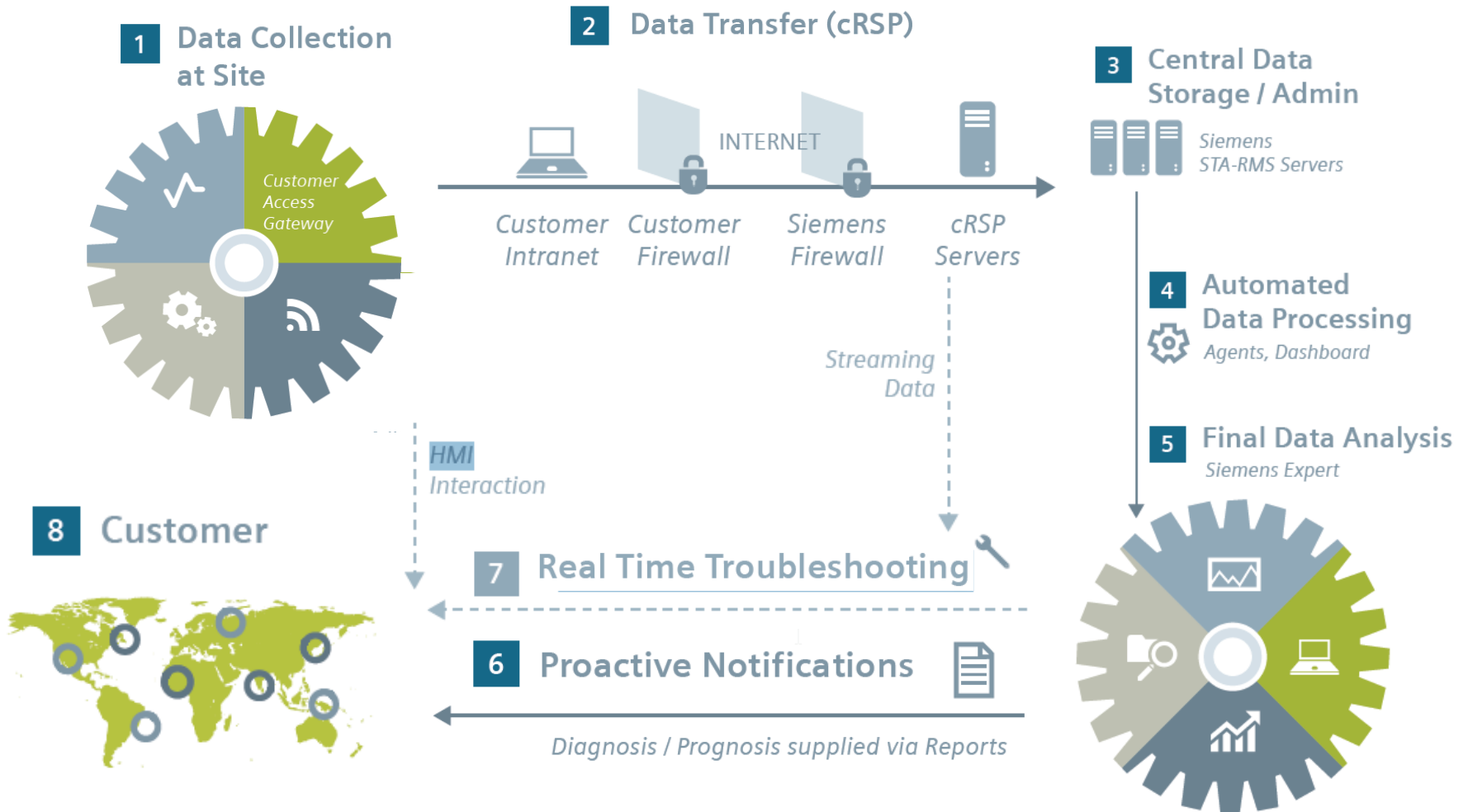


New

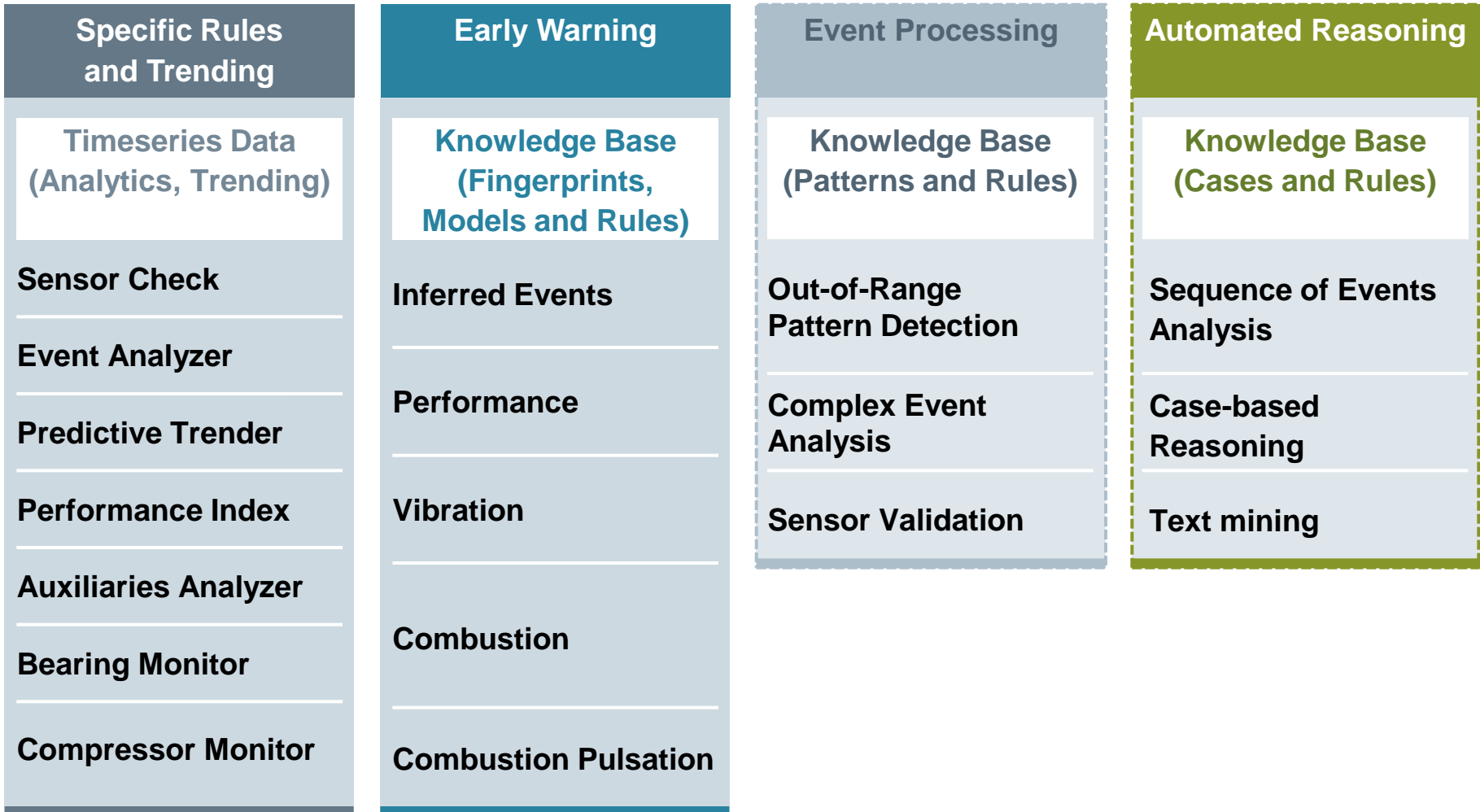


Remote Diagnostic Service

Main tasks



Data analysis tools



Some challenges from diagnostics perspective

How to quickly and economically:

- Maintain data quality?
- Transfer wisdom to system?
- Maintain/sustain the knowledge in systems?

The Siemens logo is displayed in a white rectangular box in the top-left corner. The word "SIEMENS" is written in a bold, teal, sans-serif font. The background of the slide features a complex, abstract geometric pattern of overlapping translucent polygons in shades of blue and green, with a grid of small white dots. A dark blue horizontal bar spans the width of the slide, containing the company name and the main title.

SIEMENS

Siemens Industrial Turbomachinery AB

Big Data and Diagnostics

Dr. Christer Karlsson,
R&D Project Manager and Specialist in Diagnostics

- **This document contains forward-looking statements and information – that is, statements related to future, not past, events. These statements may be identified either orally or in writing by words as “expects”, “anticipates”, “intends”, “plans”, “believes”, “seeks”, “estimates”, “will” or words of similar meaning. Such statements are based on our current expectations and certain assumptions, and are, therefore, subject to certain risks and uncertainties. A variety of factors, many of which are beyond Siemens’ control, affect its operations, performance, business strategy and results and could cause the actual results, performance or achievements of Siemens worldwide to be materially different from any future results, performance or achievements that may be expressed or implied by such forward-looking statements. For us, particular uncertainties arise, among others, from changes in general economic and business conditions, changes in currency exchange rates and interest rates, introduction of competing products or technologies by other companies, lack of acceptance of new products or services by customers targeted by Siemens worldwide, changes in business strategy and various other factors. More detailed information about certain of these factors is contained in Siemens’ filings with the SEC, which are available on the Siemens website, www.siemens.com and on the SEC’s website, www.sec.gov. Should one or more of these risks or uncertainties materialize, or should underlying assumptions prove incorrect, actual results may vary materially from those described in the relevant forward-looking statement as anticipated, believed, estimated, expected, intended, planned or projected. Siemens does not intend or assume any obligation to update or revise these forward-looking statements in light of developments which differ from those anticipated.**
- **Trademarks mentioned in this document are the property of Siemens AG, its affiliates or their respective owners.**